

Ready to be wowed? Step inside...

The AIA Dallas Tour of Homes, Dallas' only citywide home tour and the area's only tour curated exclusively by architects, returns Saturday and Sunday, November 2-3. Showcasing seven residences across Dallas, the 13th annual self-guided tour will take place from 10:00 a.m. to 5:00 p.m. The two-day tour showcases the work of some of the city's most talented architects, highlighting the most innovative and outstanding residential design in the area. Featured homes are in neighborhoods across Dallas, including Preston Hollow, Knox-Henderson, Lakewood, Lochwood, and Urban Reserve in Lake Highlands. The tour highlights a range of designs, sizes, and styles, including newly built homes, renovated houses, and economically priced residences. Immersive home inspiration is just around the corner and down the street.

The separately ticketed Premiere Party is Wednesday, October 30. The Premiere Party, which is held at a home not on the general admission tour, features passed hors d'oeuvres, open bar, meet-and-greets with the tour architects, and a general admission ticket to the tour.

New this year, AIA Dallas is offering VIP tour tickets that give ticket holders the opportunity to tour all homes and also visit the Premiere Party home during select weekend tour hours where mimosas, pastries, and swag bags will be offered.

Modern Luxury Interiors Texas gives you an inside look at the featured homes. For more information and to purchase tickets, visit hometourdallas.com.



**AIA
Dallas**

TOUR *of* HOMES

13TH ANNUAL

presented by
PORCELANOSA®
TILE / KITCHEN / BATH / HARDWOOD

2019 TOUR OF HOMES SPONSORS

Title Sponsor



Media Sponsor



VIP Hospitality Sponsor



Hospitality Sponsors



Platinum Sponsors



Wristband Sponsor

Swag Bag Sponsor

T-Shirt/ Nametag Sponsor

Gold Sponsors



Silver Sponsors



Friend of the Tour Sponsors

A.Gruppo Architects
Concept Surfaces

Coffee Sponsors

Capeltic Coffee
Civil Pour

In-Kind Sponsors

Nasher Sculpture Center
Perkins+Will

For more information, visit:

www.hometourdallas.com
#hometourdallas



13TH ANNUAL TOUR of HOMES

and PREMIERE PARTY

HOURS

Tour:

Saturday, November 2 & Sunday, November 3
10:00 a.m. to 5:00 p.m.

VIP Tour:

Saturday, November 2 & Sunday, November 3
8:00 a.m. to 11:00 a.m.

Premiere Party:

Wednesday, October 30
6:30 p.m. to 9:00 p.m.

TICKETS

Tour: \$30 in advance; \$35 weekend of; \$10 for individual home

VIP Tour: \$50 in advance (includes one tour pass); limited quantities available

Premiere Party: \$100 in advance (includes one tour pass)

Tickets can be purchased in advance at hometourdallas.com. They can also be purchased during the tour at any of the homes.

LOCATIONS

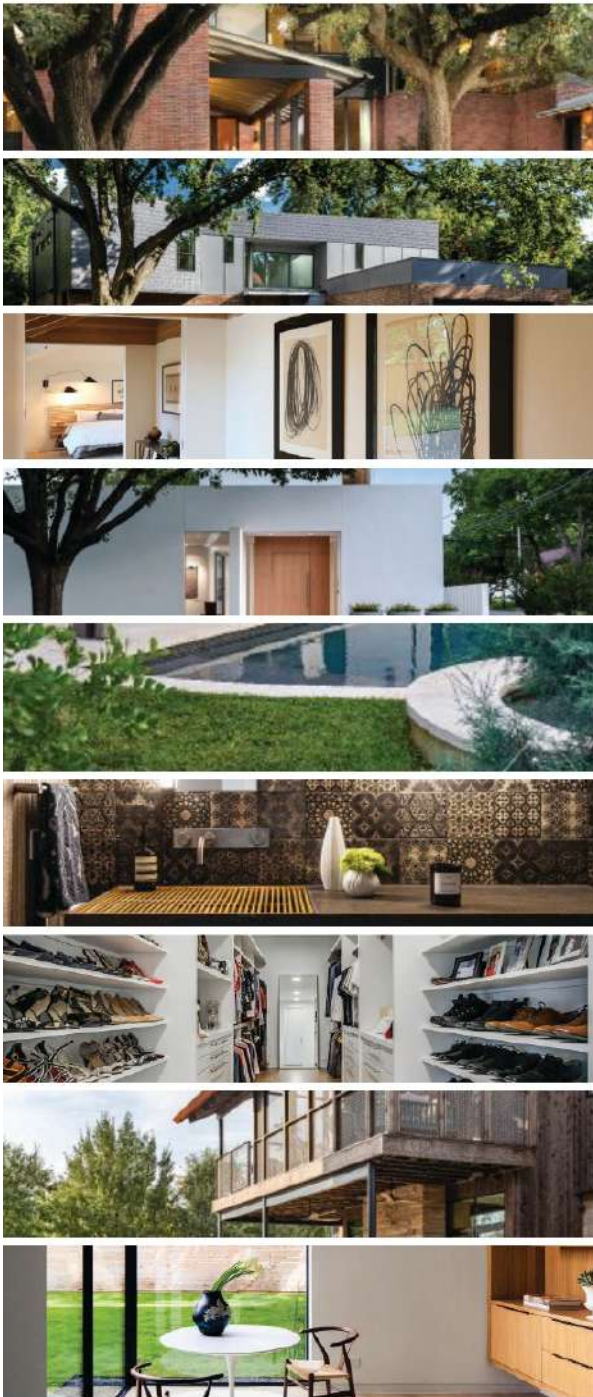
Beginning October 21, 2019, a map and addresses for the homes will be available on hometourdallas.com and the AIA Dallas Tour of Homes app downloadable on the App Store. Printed maps will be available at any of the featured homes.

THANK YOU

We want to take this opportunity to thank our sponsors for making this tour possible each year. We would also like to thank the participating architects and the gracious homeowners for allowing a glimpse into their homes. Special thanks go to the committee and volunteers for their devotion of time to this important community event. The quality of the homes on this year's tour fosters a culture of superior design. We hope you enjoy what these homes have to offer!

ABOUT AIA DALLAS

AIA Dallas, the sixth largest chapter of The American Institute of Architects, empowers architects to excel and impact their practice, profession, and community. AIA Dallas is comprised of more than 2,300 members and 300 architectural firms. Member efforts support professional development, education, advocacy, thought-provoking programming, and seven signature events. More information can be found at aiadallas.org.



SEXTON LANE

FIRM: ECKXSTUDIO FOR MODERN ARCHITECTURE
ARCHITECTURAL DESIGN TEAM: DAN ECKELKAMP, AIA

CONTRACTOR: HOLZ + STEIN CUSTOM HOMES
INTERIOR DESIGN AND LANDSCAPE ARCHITECT: ECKXSTUDIO FOR MODERN ARCHITECTURE

GEOTECHNICAL ENGINEER: HOOPER GROUP
STRUCTURAL ENGINEER: ERIC L DAVIS ENGINEERING INC.

COMPLETED: 2018
SQUARE FOOTAGE: 2,804



This modern residence in an up-and-coming pocket of Preston Hollow fulfills the dreams of its owners, who are passionate about modern art, sculpture, and architecture. The architect husband works from the house, so separating the home office and public spaces from the couple's personal rooms received extra attention.

The office sits immediately adjacent to the courtyard entry area and the front door. A half-bath separates the office from an open-plan living/dining/kitchen space, which features large patio doors overlooking the pool and courtyard. To further ensure privacy, all three bedrooms are on the second floor, with the master suite near the rear to capture treehouse-like views of a large oak's leaf canopy.

Warm, subtle materials are used throughout the residence to create the comfortable, inviting environment important to the owners. The finishes blend nicely with the art and sculpture, and unique finishes in select locations like the powder room contrast with the main material palette to provide a sense of surprise upon entering.

The residence's exterior design takes cues from modern art and forgoes symmetry, featuring a dark/light color palette and an energetic pattern across the painted siding. This pattern recalls a familiar design element and gives the house its name — project.BARCODE.

PHOTOGRAPHY: Shoot2Sell



VANGUARD WAY

FIRM: MAREK ARCHITECTURE
ARCHITECTURAL DESIGN TEAM: SCOTT MAREK, AIA AND HIEU LE

CONTRACTOR: RIPPLE D+B
GEOTECHNICAL ENGINEER: TERRADYNE LLC
STRUCTURAL ENGINEER: CHILDRESS ENGINEERING (FOUNDATION); ELEMENT ENGINEERING (FRAMING)

COMPLETED: 2018
SQUARE FOOTAGE: 2,130



Vanguard Way is in Urban Reserve, a modern enclave of residences in northeast Dallas. The clients wanted a house that was modern but rustic where they could enjoy the neighborhood and nature.

The house is set back from the street by Urban Reserve's pond on the west side of the lot. A bridge, shared by residents, spans the pond for access. First- and second-floor porches offer shade and outdoor spaces to enjoy the pond, pool, and a distant view of the street life and a grove of cypress trees. A stair tower on the northwest corner anchors the edge of the porch, buffers the western sun, and creates separation from the closest neighbor.

The house narrows at the kitchen and dining areas to form a patio that filters light into the body of the house. The master suite, at the back of the house, borders on a small garden connecting the house to the carport. The exterior is clad in Tennessee Crab Orchard stone to tie it to the existing stone surrounding the pond. With their natural, earthy color tones, the cedar siding, Douglas fir beams, and a Cor-Ten roof further blend with the stone. Inside, white walls contrast with reclaimed accents as well as with the natural exteriors. Through the blending of materials — joining the old and new, and connecting the interior and exterior — the home has become the "urban cabin" the clients desired.

PHOTOGRAPHY: Hieu Le and Shangyun Huang



CLAYTON AVENUE

FIRM: MORRISON DILWORTH + WALLS
ARCHITECTURAL DESIGN TEAM: MARK DILWORTH, AIA AND WESLEY TUNNELL, AIA

CONTRACTOR: BLACK CONSTRUCTION
GEOTECHNICAL ENGINEER: HOOPER GROUP
LANDSCAPE ARCHITECT: BELLA FIRMA
STRUCTURAL ENGINEER: L.A. FUESS PARTNERS

COMPLETED: 2017
SQUARE FOOTAGE: 3,900

The empty-nester owners raised two sons in their residence of over 30 years in a long-established, tree-lined East Dallas neighborhood. The couple wanted a new house but also wanted to stay in their neighborhood. So they decided to build on the same site, creating a modern living space, comfortable with its neighbors and providing a serene respite in an evolving urban setting.

Flooded with natural light, the main living spaces and master bedroom are organized around a central courtyard, allowing expanded and seamless indoor-outdoor living and entertaining.

The palette and the form of the residence are restrained and simple. The mass of the second story, which includes two additional en-suite bedrooms, is set back from the perimeter of the first floor to reduce the home's scale in relation to its neighbors.

The design paid careful attention to the visibility of a red oak in the front yard — the couple planted the tree three decades ago. The balance of the front and side yard plantings, as well as the courtyard, work well with the traditional neighborhood landscape and the North Texas climate.

PHOTOGRAPHY: Charles Davis Smith, FAIA





Cragmont Avenue

FIRM: SHM ARCHITECTS
ARCHITECTURAL DESIGN TEAM: ENRIQUE MONTENEGRO, AIA; NICHOLAS MCWHIRTER, AIA; JONATHAN WALKER, AND KEATON CIZEK
CONTRACTOR: SUSAN NEWELL CUSTOM HOMES LLC
INTERIOR DESIGN: SHM ARCHITECTS
LANDSCAPE ARCHITECT: DAVID ROLSTON LANDSCAPE ARCHITECTS
STRUCTURAL ENGINEER: BURY & PARTNERS

COMPLETED: 2017
SQUARE FOOTAGE: 5,115

The clients at the Cragmont residence are empty nesters who wanted a home that wouldn't feel overwhelming for just the two of them but that would be large enough to accommodate their children's families when they come to town. The couple also wanted a home appropriate in scale for the neighborhood, which lies within a conservation district.

The home uses simple, recognizable forms to blend in with the existing neighborhood. However, unique details and materials satisfy the owners' desire for a clean, contemporary aesthetic inside and out. The exterior is clad in a combination of stucco, cut limestone from Mexico, and metal siding. All the major public spaces (dining, kitchen, great room) as well as the master bedroom are organized around a small pool and courtyard.

Inside, the main living area is a large, open space containing multiple elements, which are organized as "furniture" pieces to define the specific uses. For example, a walnut-clad box at the end of the great room houses the bar, coat closet, and powder room. It also supports a steel cantilevered stair that leads to a mezzanine level (the top of the box) where a pool table is perched. The entire box is sunk down so that the mezzanine level is low enough to encourage conversation between guests in the great room sitting area and the pool players.

PHOTOGRAPHY: Nathan Schroder Photography



ALDWICK CIRCLE

FIRM: A. GRUPPO ARCHITECTS
ARCHITECTURAL DESIGN TEAM: THAD REEVES, AIA; TIMOTHY BALLARD; AND JON BECK

CONTRACTOR AND LANDSCAPE ARCHITECT: A. GRUPPO ARCHITECTS
GEOTECHNICAL ENGINEER: HOOPER GROUP
STRUCTURAL ENGINEER: ELEMENT ENGINEERING

COMPLETED: 2019
SQUARE FOOTAGE: 3,200



This Aldwick Circle residence is in the Old Lake Highlands neighborhood of East Dallas. The architects met the clients, who both love modern architecture and furniture, on the 2016 AIA Dallas Tour of Homes.

In designing the home, the team drew inspiration from a mature oak tree in the front yard and context from the surrounding wooded properties. The exterior of the home is a combination of brick and shake shingle siding. The palette is executed in a modern way, but many traditional examples of the same palette are found in nearby properties. The owners wanted a modern home, but not one that would stick out on the street.

The plan is a modified "H" shape that has an entry courtyard and a smaller private deck area in the back. The ground floor contains the entry, kitchen, living room, dining room, small office, media room, and master bedroom suite. The kids' rooms, with their own bathrooms, are upstairs. The house, a design-build venture with A. Gruppo Architects acting as architects and general contractors, includes many custom details.

The family spends a lot of time outside, making heavy use of the 600-square-foot garage. It was placed at the front of the house as a cost-saving measure over the site work and concrete that a rear-entry garage would have required.

PHOTOGRAPHY: Charles Davis Smith, FAIA



CALADIUM DRIVE

FIRM: NIMMO
ARCHITECTURAL DESIGN TEAM: JOSHUA NIMMO, AIA AND KRISTIN WALSH

CONTRACTOR: WILLIAMS DRAKE
LANDSCAPE ARCHITECT: PAPER KITES STUDIO
STRUCTURAL ENGINEER: ELEMENT ENGINEERING

COMPLETED: 2019
SQUARE FOOTAGE: 3,250



This project took a quiet approach in expanding a 1960s ranch-style house to accommodate the needs of a young, growing family. The design makes a nod to the North Dallas neighborhood with subtle improvements to the structure and landscape. Large cypress trees in the front and sycamores in the back set the tone of a serene setting for the new inhabitants.

The owners sought a nurturing environment for their family that would foster togetherness, along with contemplation and peace, but that also would let two energetic little boys run around like the kids they are. They wanted flexible spaces that could be used in a variety of ways and adapted over time as their family matures, without square footage that would go unused.

NIMMO's design made modest additions to the home's footprint during the complete renovation of the interior. Flowing spaces, asymmetrical vaulted ceilings, large hidden doors, and wide hallways facilitate entertaining and play while capturing a sense of magic and intrigue for the boys. Understated finishes and floor-to-ceiling glazing in many parts of the home instill a strong indoor-outdoor connection and a feeling of calm.

Owner and architect worked side by side to create a place especially suited for this household.

PHOTOGRAPHY: NIMMO



ALEXANDER DRIVE

FIRM: MAESTRI STUDIO
ARCHITECTURAL DESIGN TEAM: EDDIE MAESTRI, AIA; BROOKE KINGERY; KATIE PAULSEN; AND JANELLE BURNS

CONTRACTOR: HARTMAN CONSTRUCTION
INTERIOR DESIGN: MAESTRI STUDIO
LANDSCAPE ARCHITECT: BONICK LANDSCAPING
STRUCTURAL ENGINEER: THE REEDY GROUP

COMPLETED: 2019
SQUARE FOOTAGE: 6,602

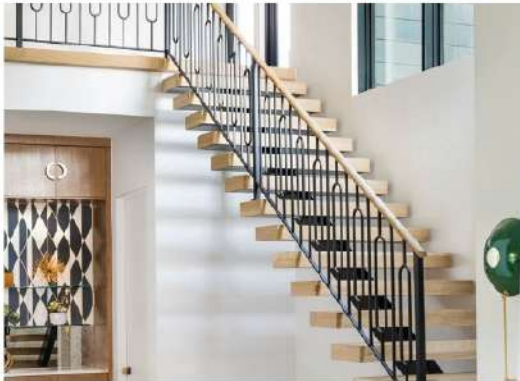
This modern single-story Lakewood home was built in 1952, with an addition made to the rear in the 1980s. The owners loved the Mid-Century Modern details of the original 4,419-square-foot home, particularly the formal living room and the pink limestone planter at the breakfast room, but wanted to expand and update the home while paying homage to its design.

Maestri Studio redesigned the home to add a second story, garage, a large back porch, and a central front courtyard highlighting a mature live oak in the middle. The majority of the home was demolished, but the pink limestone planter was preserved and the formal living room and front porch reconstructed with improvements. It was important to the design team to create new larger spaces but to keep the original feeling and scale of the home as much as possible. The resulting 6,602-square-foot home is great for entertaining as well as comfortable everyday living.

The reconstructed home is modern and filled with Mid-Century influences, pops of color, and patterns. The design balances a modern aesthetic with warm, natural materials and a strong connection to the outdoors. The bright, open floor plan features an abundance of natural light streaming in through floor-to-ceiling glass.

The reimagined custom home was carefully curated with high-end finishes and commissioned art. Details include wood slat ceilings, steel columns, custom millwork, patterned wallpapers, and vintage-inspired modern lighting and tile. Maestri Studio provided the full-service architecture and interior design for this project, including furniture and space planning.

PHOTOGRAPHY: Jenifer McNeil Baker





Premiere Party and VIP Home
DORSET ROAD

FIRM: M GOODEN DESIGN
ARCHITECTURAL DESIGN TEAM: MICHAEL GOODEN, AIA AND KEVAN RUSSELL

CONTRACTOR: HARTMAN CONSTRUCTION
GEOTECHNICAL ENGINEER: HENLEY-JOHNSTON
INTERIOR DESIGN: M GOODEN DESIGN
LIGHTING DESIGNER: DOUGLAS ARCHITECTURAL LIGHTING
MEP ENGINEER: TELIOS
STRUCTURAL ENGINEER: ARCH CONSULTING ENGINEERS PLLC

COMPLETED: 2019
SQUARE FOOTAGE: 10,260

Taula House is a single-family residence designed for a multigenerational family in Dallas' Preston Hollow neighborhood. Taula House derives its name from the Sanskrit word for "balance." Guided by Vastu Shastra, the Hindu architectural principles for positive energy, this modern dwelling expresses a balance between traditional beliefs and contemporary ideologies of design. Symmetry, directional alignments, spatial geometry, and delicate detailing were paramount to the project.

The exterior is clad with precast concrete, weathered steel, and dark gray basalt stone. Accents of Brazilian ipe siding, polished stucco, and zinc composite panels complete the palette of materials. The textures and natural hues are enhanced by the sunlight that dances and dapples across each elevation as it travels through the day. Steel-framed glass, in strong vertical and horizontal shapes, adds to a striking impression.

Taula House's structure consists of a steel perimeter frame to support the load of the large precast concrete panels. The 53 unique panels extend full height, with no horizontal joints, and some reach over 30 feet tall. Wood trusses provide clear spans, meaning none of the interior walls are load-bearing.

Highlights of the exterior palette make their way inside the house with a refined use of weathered steel panels and basalt stone floors and walls. Behind a 20-foot-tall curtain wall of glass near the entry, the staircase employs a double-cantilevered switchback design with white oak treads.

Overall, Taula House is a graceful mix of public and private, balancing the family's love for entertaining and the importance of peaceful seclusion. While there is boldness in the home's expression and materiality, there is also calmness in the beauty.

PHOTOGRAPHY: Parrish Ruiz de Velasco

This home is exclusive to the Premiere Party and VIP ticket holders. The Premiere Party will kick off the 2019 AIA Dallas Tour of Homes on Wednesday, October 30.

Premiere Party and VIP tickets are available at www.hometourdallas.com and include a ticket to the weekend tour. ■



OCTOBER 2019

AIA DALLAS TOUR OF HOMES PREFERRED PARTNERS

The Dallas Tour of Homes
celebrates the finest design
talent in North Texas:

AIA PREFERRED PARTNERS:

- Pella Windows & Doors
- Ludowici
- AquaTerra Outdoor Environments
- Capital Distributing
- TKO Associates



Photography by Nathan Schroder



SPECIAL PROMOTION

HOME TOUR

PELLA WINDOWS

At Pella, we don't just create windows and doors. We innovate with purpose, design with passion, build with integrity and deliver with pride. From testing beyond industry requirements to striving for continuous innovation - we go beyond what meets the eye to make beautifully designed products that deliver outstanding design and performance across the Metroplex.

Beyond market leading innovation, the Pella Architectural Services team provides a wide array of professional services to support the architect including, Installation Design, Code Compliance Expertise, and Budgeting Assistance.

Pella has the broadest product portfolio in the industry manufacturing windows & doors in wood, fiberglass & vinyl to meet the needs of today's architect. Your Pella DFW team has the experience and expertise to be your total solutions provider. 801 Hanover Drive #600, Grapevine, TX 76051, 682.218.8625, pelladallas.com, belltc@pella.com

» *Pella has been issued over 150 product and design patents since 1925 for various windows and doors and their components. In addition, Pella engineers work tirelessly everyday on thermal dynamics, wind loads and water management to provide outstanding solutions for our architectural and commercial partners. From Contemporary to Classical design, extensive product portfolio and local project management, the Pella DFW team is your best solution for your next project.* - Matt Poulter (President & Owner, Pella Windows & Doors, DFW)



SPECIAL PROMOTION

HOME TOUR / MEET



Ludowici Dallas Design Center

» *Chances are if the client can dream it, we can make it. We can reproduce every profile we've made since 1888 – a statement very few building material manufacturers can make.*

Ludowici
 133 Manufacturing Street, Dallas, TX 75207
 214.253.8203, ludowici.com, terrealna.com
 @ludowici, @ludowici_dallas, @terrealna

For over 130 years Architects and Designers have recognized Ludowici as the premier architectural terra cotta tile brand. They adorn thousands of historical, residential, government, educational, commercial, and religious buildings across the world. Their product line is extensive – ranging from roof tile, quarry floor tile, and shake or slate alternatives – to wall cladding, solar shades, and rainscreen systems. Hand-crafted in New Lexington, Ohio, Ludowici is proud to be the industry expert in creating custom glazes and hand-crafted surface textures. This year been an adventure – as they announce the opening of their first 9,000 sq. ft. showroom right here in Texas.

A unique space, Ludowici's new Design Center is in the heart of Dallas's Design District. Vibrant color and texture combinations are surrounded by luxury surface material vignettes. The goal was to create a space where high end, beautiful and sustainable building surface materials come together in a single location. With hundreds of roof tile lay-ups, color combinations, partner displays – European Limestone, French Oak flooring, French windows, handmade brick, cut stone, wood beams, copper and zinc gutter systems, snow guards and chimney pots – there is something for every project.

If you see a historical home with a tile roof, there's a good chance it's us. For example, our tiles pave the West Wing of the White House and sit atop famed architect Frank Lloyd Wright's Westcott House. One of the most unique things about us is our history, which spans the state of Texas long before the new showroom. We're found covering dozens of college campuses, like TCU, Texas Tech, and The University of Texas Austin. In DFW specifically, you can look up to see Ludowici on Highland Park Village, the Degloyer Mansion at the Arboretum, or around the Fort Worth Stockyards – and within historic neighborhoods such as Lakewood, Park Cities, Swiss Avenue, Highland Park, and Oak Cliff. We continue to produce the most beautiful, sustainable, and maintenance free construction products available in the industry, and are proud to now call Texas home.

SPECIAL PROMOTION



SPECIAL PROMOTION

HOME TOUR / MEET

AquaTerra Outdoors

AquaTerra Outdoors is an international award-winning full-service design + build firm passionate about outdoor living. Since 2007, AquaTerra has been building and designing luxury outdoor environments filled with pools, landscaping, outdoor structures, and more. Each project is approached with an open mind, allowing them to craft environments that are as unique as their clients. AquaTerra's design solutions emphasize a seamless relationship between indoor spaces and outdoor living. Everyone on the design + construction teams share a passion for exquisite landscapes and outdoor lifestyles. AquaTerra stands apart from other pool builders and landscape architects due to their ability to handle the moving parts of design and construction in house. Since its inception, AquaTerra has maintained a singular focus on offering uncompromising outdoor environments to discerning clients. Each and every AquaTerra environment is the result of our collaboration with passionate clients whose desire for excellence extends from their homes into their outdoor play and living spaces. 4252 Marsh Ridge Rd. Carrollton, TX 75010, 214.387.8333, info@aquaterraoutdoors.com.



Linder: The minimalistic design of the pool + landscaping compliments the basic shape of the architecture. By maintaining simplicity in the landscape design, through grasses and concrete, the dominate form of the residence shines.



» *Each and every AquaTerra environment is the result of our collaboration with passionate clients whose desire for excellence extends from their homes into their outdoor play and living spaces.*»



Darver: A spacious yard in the middle of the city initiated the opportunity to create an environment distant from city life. A creek bed that flows to a stream under the corridor of the home provides the space with the tranquility of a nature preserve.





2910 N Stemmons Frwy., Dallas 75247 | capitaldistributing.com | 214.638.2681

